



Network License Manager Guide

GstarCAD 2021

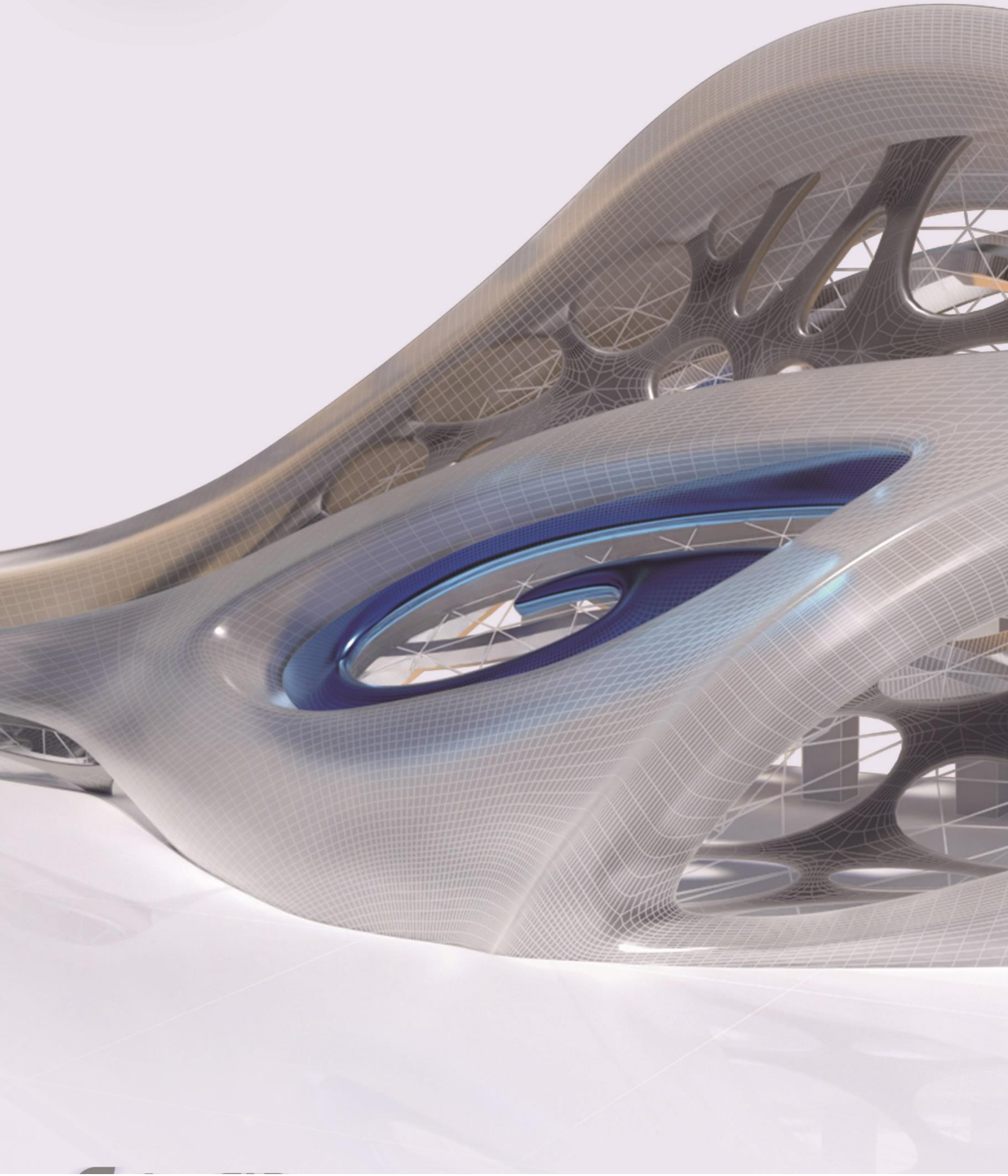


Table of Contents

1. GstarCAD Network License Manager Installation and Settings	3
1.1 Installation	3
1.2 Settings	5
2. GstarCAD Network License Activation and Return	7
2.1 Online Activate	7
2.2 Manual Activate	8
2.3 Online Return	11
2.4 Manual Return	12
3. Check The Users Who Are Using The Network License from Your Server	16
4. Check the Users Who Borrowed the Network License from Your Server	17

GstarCAD 2021 Network License Manager Guide

GstarCAD Network License encryption mode enables you to share a number of GstarCAD licenses on your office LAN. It gives flexibility of license floating among a working group. Before the network installation, you should specify the server computer to install [GstarCAD 2021 Network License Manager](#).

1. GstarCAD Network License Manager Installation and Settings

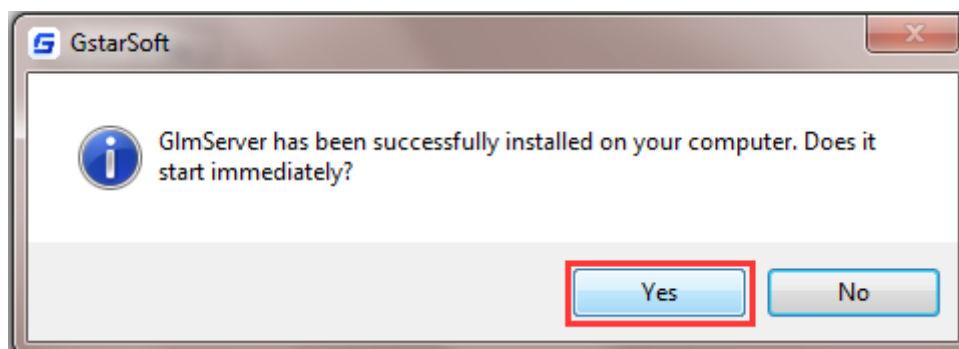
1.1 Installation

Please follow the steps below to install and set the configurations:

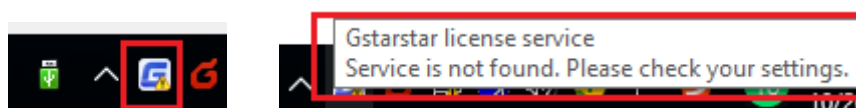
1. Double click "[glm-Setup](#)" to install [GstarCAD 2021 Network license Manager](#).



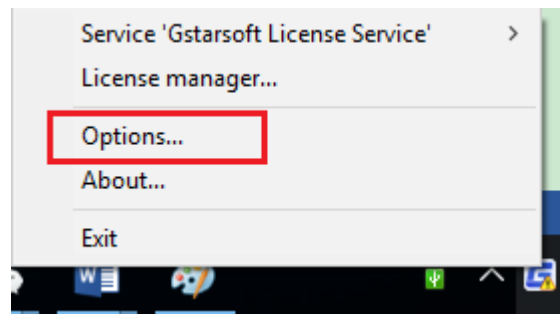
2. You can choose whether start the server immediately or start it later.



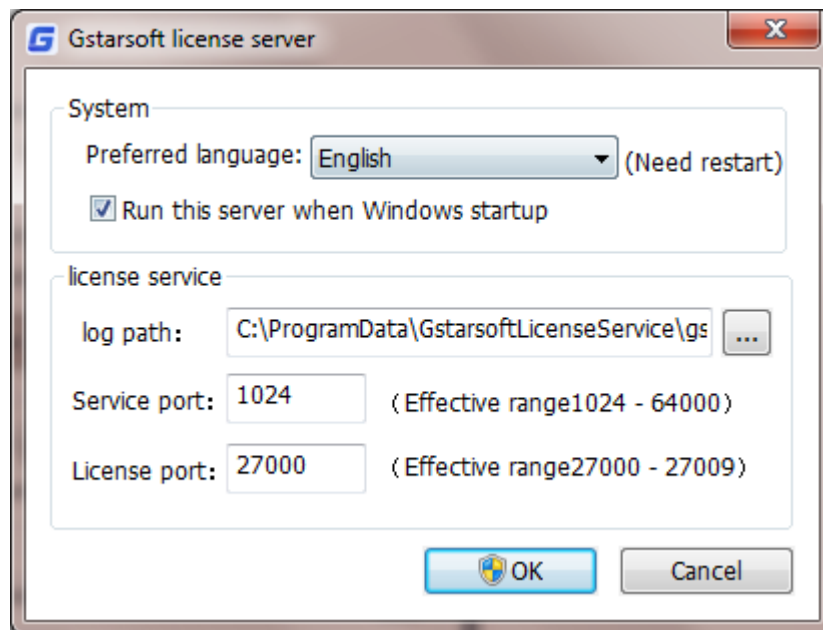
3. You will find a tray icon with exclamation mark shown in the taskbar after installation has been completed. And there will be a tips like "Service is not found. Please check your settings" before you set the configurations.



4. Click **GstarCAD Network License Manager** icon and click **Options** to set the configurations



5. Set the configurations as below:



System:

Preferred Language: You can choose your preferred language which can be activate after the GstarCAD License Manager restarted.

Run this server when Windows startup: When this options is checked, GstarCAD License Manager can be restarted automatically when Windows startup.

Remark: "Run this server when Windows startup" option will not affect the license status.

License service:

Log Path: You can specify a path to save the license logs and the path should allow LocalService to write in, otherwise the license service will fail to run. If your operation system is Windows 10, the default path ProgramData is recommended.

Service port: The valid range should among 1024-64000.

License Port: The valid range should among 27000-27009.

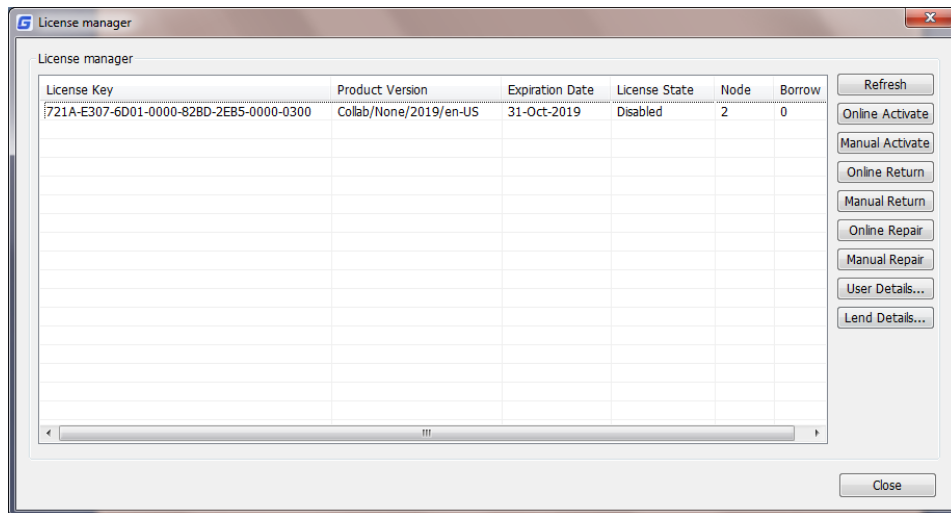
6. After the configurations have been set, the exclamation mark with change to check mark.



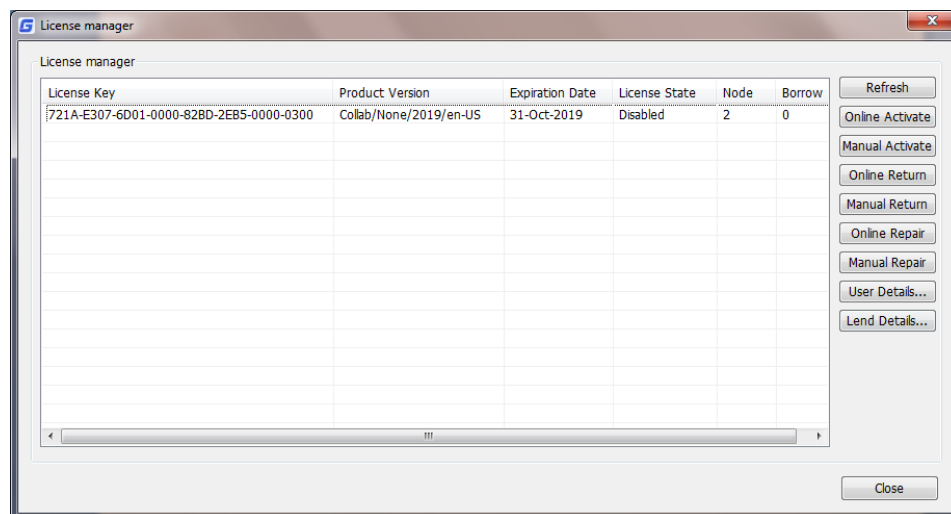
1.2 Settings

1. Click **GstarCAD License Manager** icon and select **License Manager** option to load license manager box.

You can activate, return the GstarCAD network licenses online or manually, you can repair the license when it shows error message in license manager. The users whom are sharing your network license and lend detail also can be found in license manager.

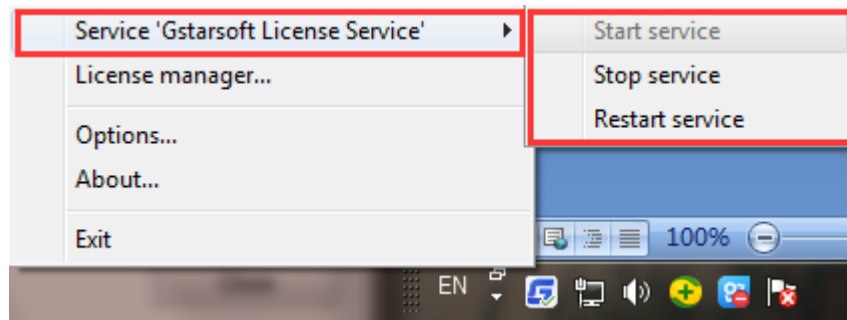


2. Feature list in License Manager



- Refresh:** Refresh GstarCAD network license status.
- Online Activate:** Activate GstarCAD network license online.
- Manual Activate:** Manually Activate GstarCAD network license.
- Online Return:** Return GstarCAD network license online.
- Manual Return:** Manually return GstarCAD network license.
- Online Repair:** Repair GstarCAD network license online.
- Manual Repair:** Manually repair GstarCAD network license.
- User Details:** Shows the users information.
- Lend Details:** Shows the Network license lend information.

3. Adjust GstarCAD Network License Service



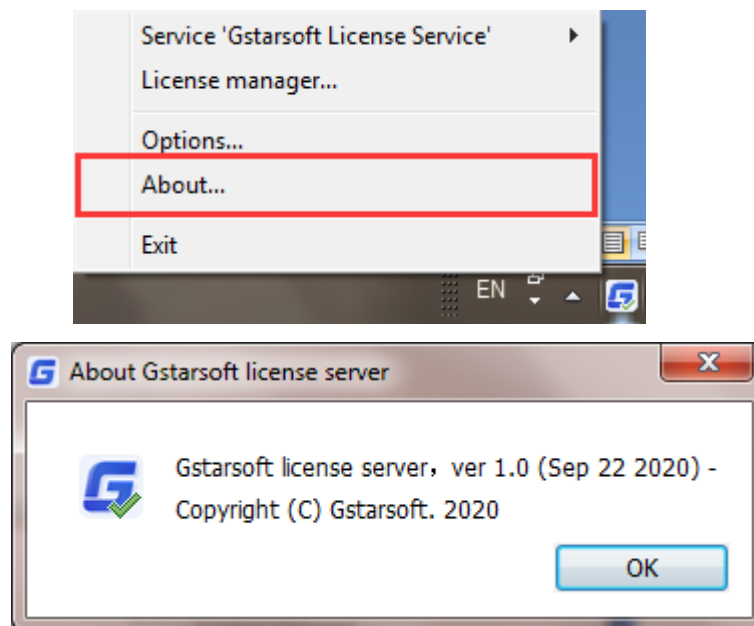
Start Service: Starts Gstarsoft License Service, other users whom with the permission can borrow or lend the licenses from the server.

Stop Service: Stop Gstarsoft License Service, other users whom with the permission will not allowed to borrow or lend the licenses from the server.

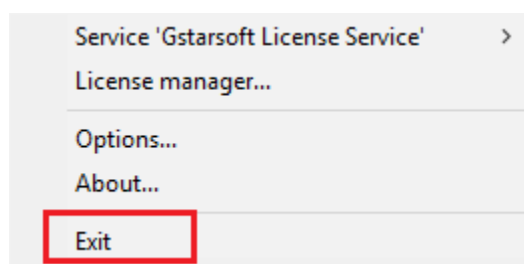
Restart Service: When the service meets some problems, you can try to restart it.

Note: if you need to do any changes on your license, please Stop service first and Restart service after the operation have been done.

4. Get the GstarCAD Network License Manager version information in About.



5. Click Exit to quit GstarCAD Network License Manager.



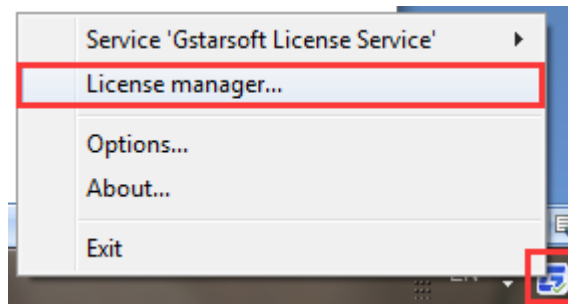
2. GstarCAD Network License Activation and Return

If you have a GstarCAD 2021 Network License Key, you can run GstarCAD License Manager on server computer to manage your Network License, such as license activation, license return and so on.

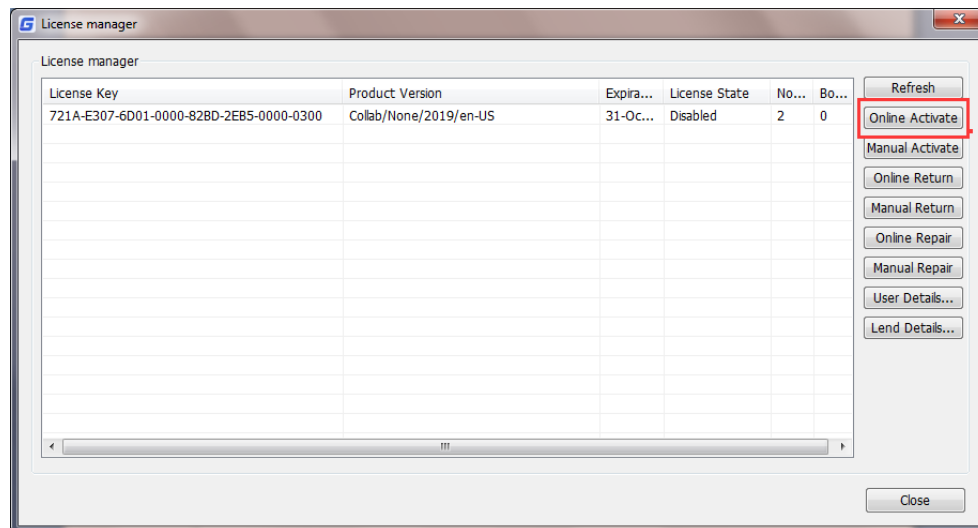
2.1 Online Activate

Instruction: make sure your computer connect to the internet.

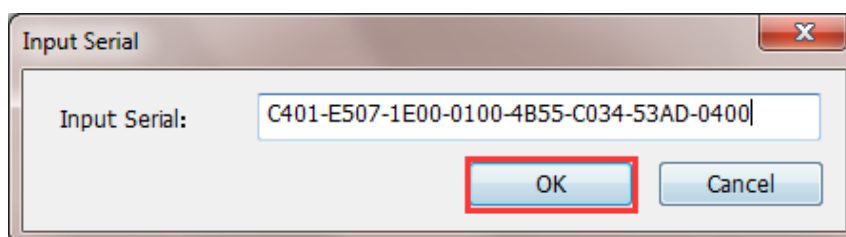
1. Click **GstarCAD License Manager** icon and select **License Manager** option.



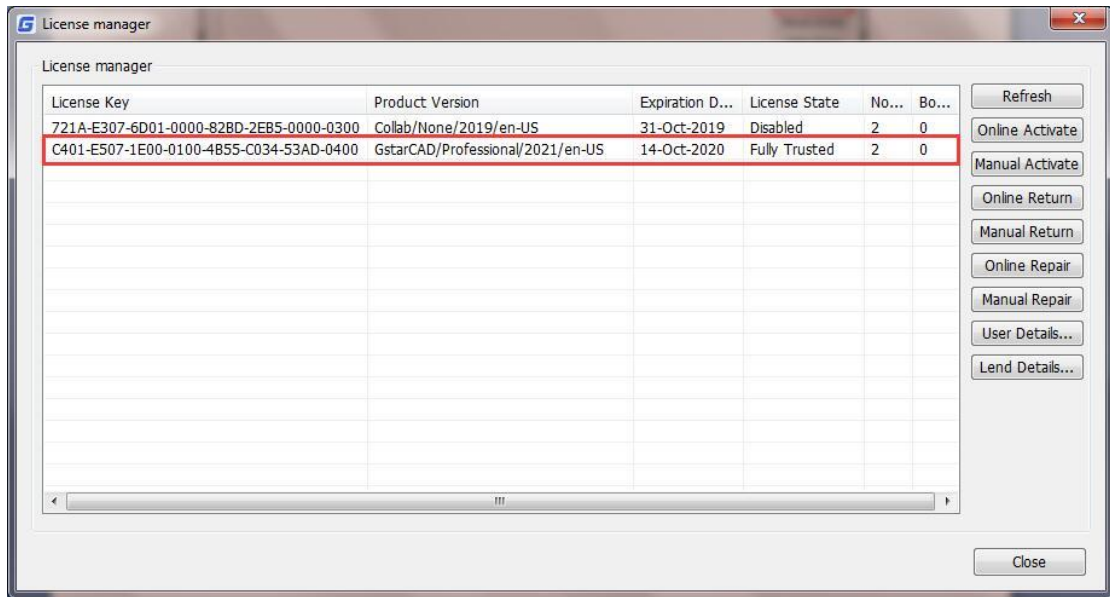
2. Click **Online Activate** button.



3. Input the **Serial Number** and click **OK** button.



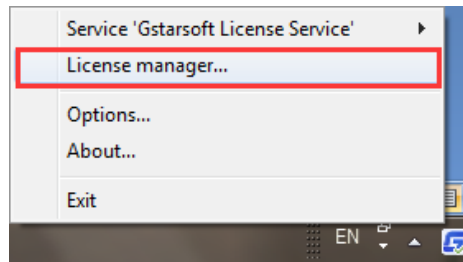
- Then you will find the activated SN shows in the license manager list.



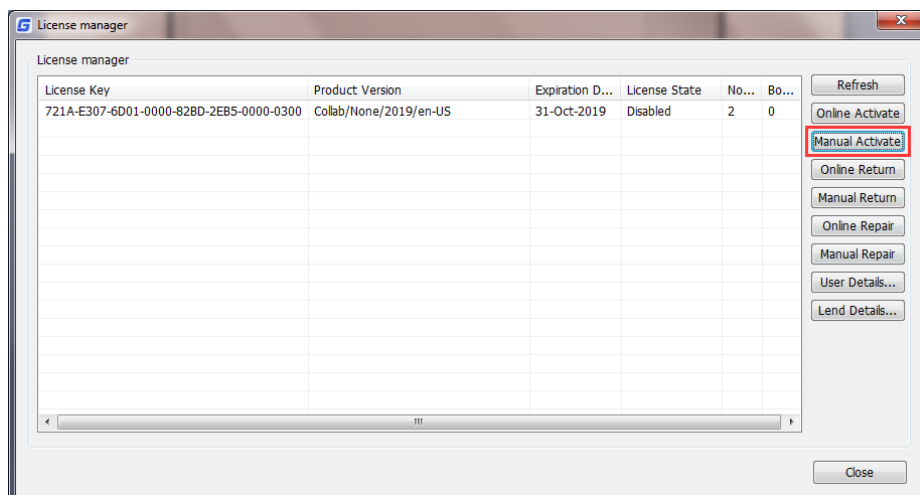
2.2 Manual Activate

Instruction: If your computer is not connected to the internet, you can use activation file (xml file) to activate your GstarCAD 2021 Network license manually.

- Click **GstarCAD License Manager** icon and select **License Manager** option.



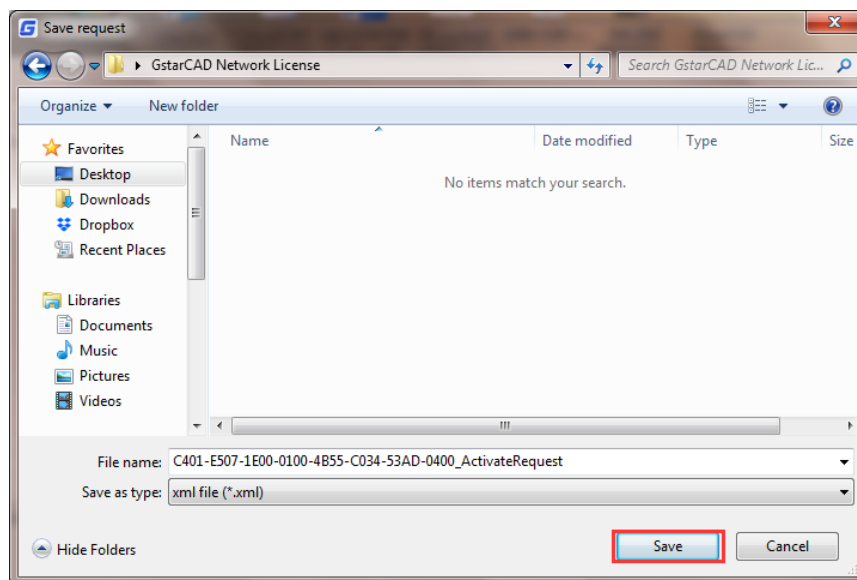
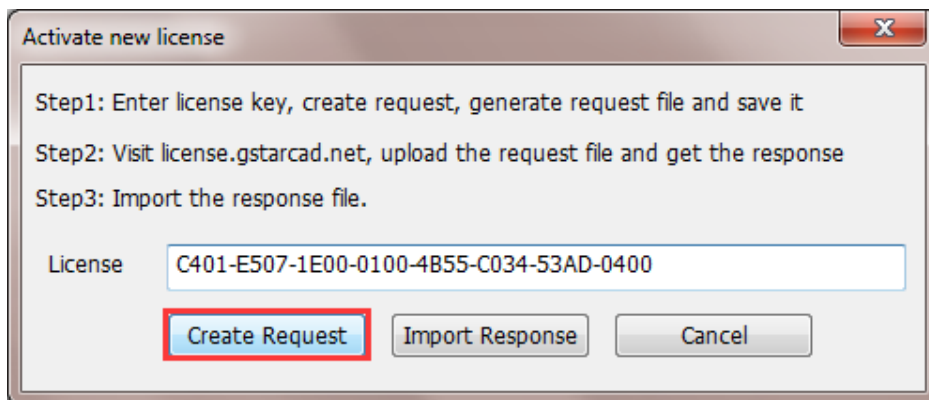
- Click **Manual Activate** button.



3. Please follow the three steps in this dialog box to activate manually.

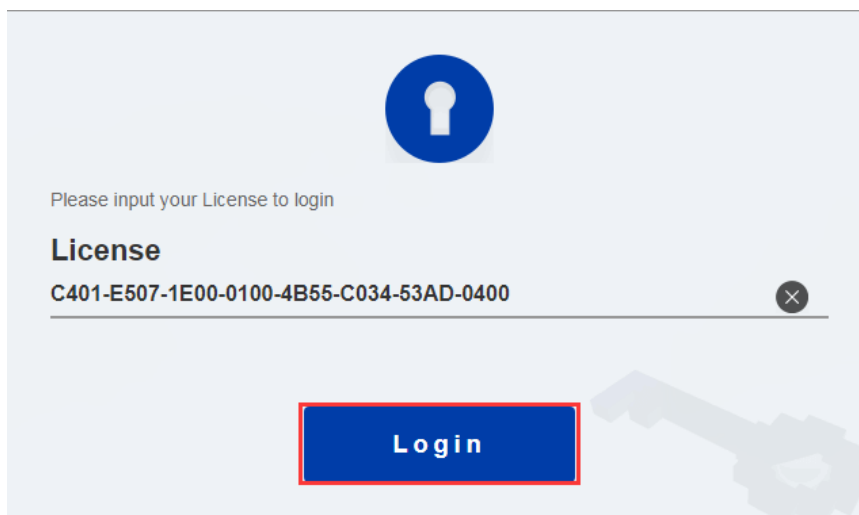
Steps 1:

- 1) Input the **Serial Number** and click **Create Request** button to generate the request file.



Steps 2:

- 1) Please access GstarCAD online service center: <https://license.gstarcad.net/> and login with the **License Key**.



2) Then click **Activate** button in Activation tab.

Activation License Management Device Management My License C401-E507-1E00-0100-4B55-C034-53AD-0400 Logout

Activate

My License: C401-E507-1E00-0100-4B55-C034-53AD-0400

Product	Encryption Type	Network License Node Quantity	License Type	Language	Expired	License Status	Response XML
GstarCAD Professional 2021	FlexNet Network Version	2	Internal Use License	en-US	2020-09-14-2020-10-14	Returned	

Please download Response XML file to activate your product.
Please click "Return License" to return your license.

3) Click the **Choose File** button and select the request file you have saved and click the **Submit** button to continue.

Activation My License C401-E507-1E00-0100-4B55-C034-53AD-0400 Logout

My License: C401-E507-1E00-0100-4B55-C034-53AD-0400

Request XML File

Choose File

Upload File: C401-E507-1E00-0100-4B55-C034-53AD-0400_ActivateRequest.xml

Load the credible request XML activation file which created at user client

Submit


Find out the file and click it to submit

4) Click the **Download** button and save the license file (Response XML File). We recommend you to store the license file to your USB flash drive.

Activation License Management Device Management My License C401-E507-1E00-0100-4B55-C034-53AD-0400 Logout

Activate

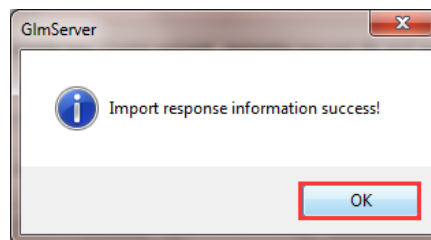
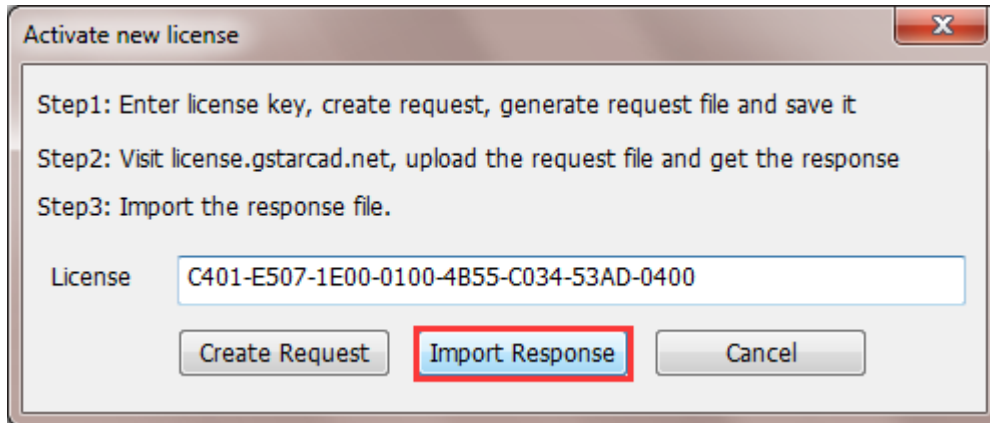
My License: C401-E507-1E00-0100-4B55-C034-53AD-0400

Product	Encryption Type	Network License Node Quantity	License Type	Language	Expired	License Status	Response XML
GstarCAD Professional 2021	FlexNet Network Version	2	Internal Use License	en-US	2020-09-14-2020-10-14	Activated	

Please download Response XML file to activate your product.
Please click "Return License" to return your license.

Steps 3:

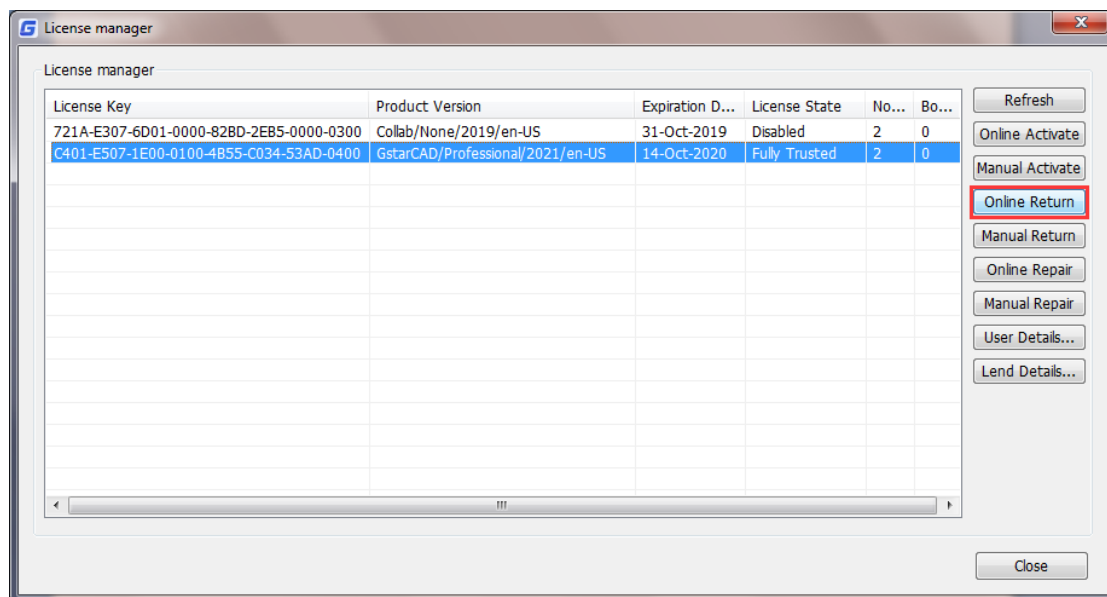
Back to your computer and find out License manager option from GstarCAD Network License Manager. Please click the [Import Response](#) button and select the license file you have just downloaded and saved from another computer, and then click the [OK](#) button to finish the activation.



2.3 Online Return

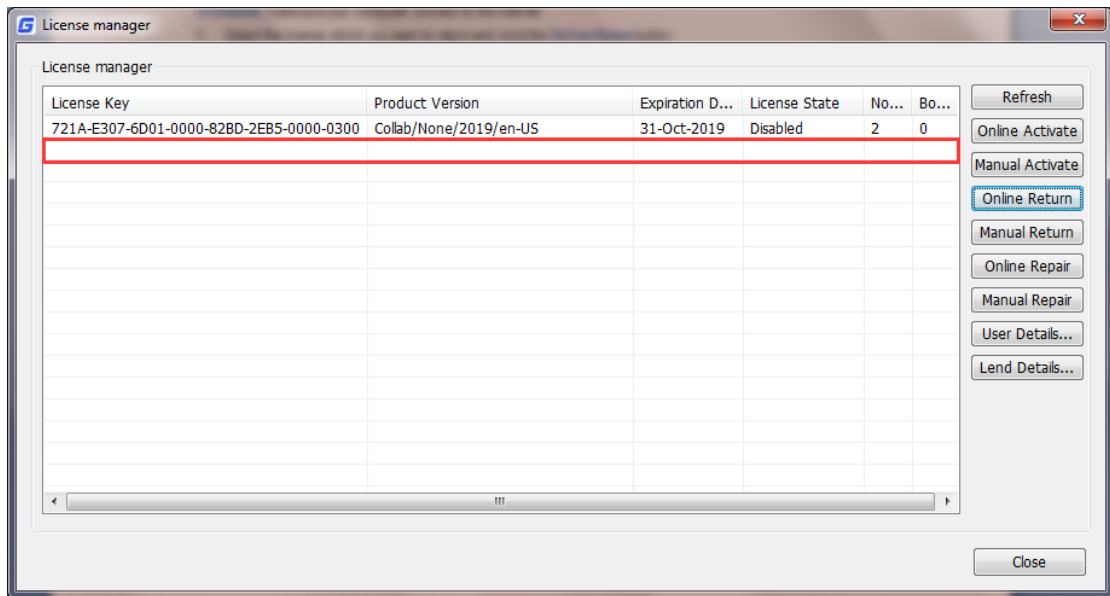
Instruction: make sure your computer connect to the internet.

1. Select the license which you want to return and click the [Online Return](#) button.



2. After a few seconds, you can see the license you have selected to return has disappeared from License

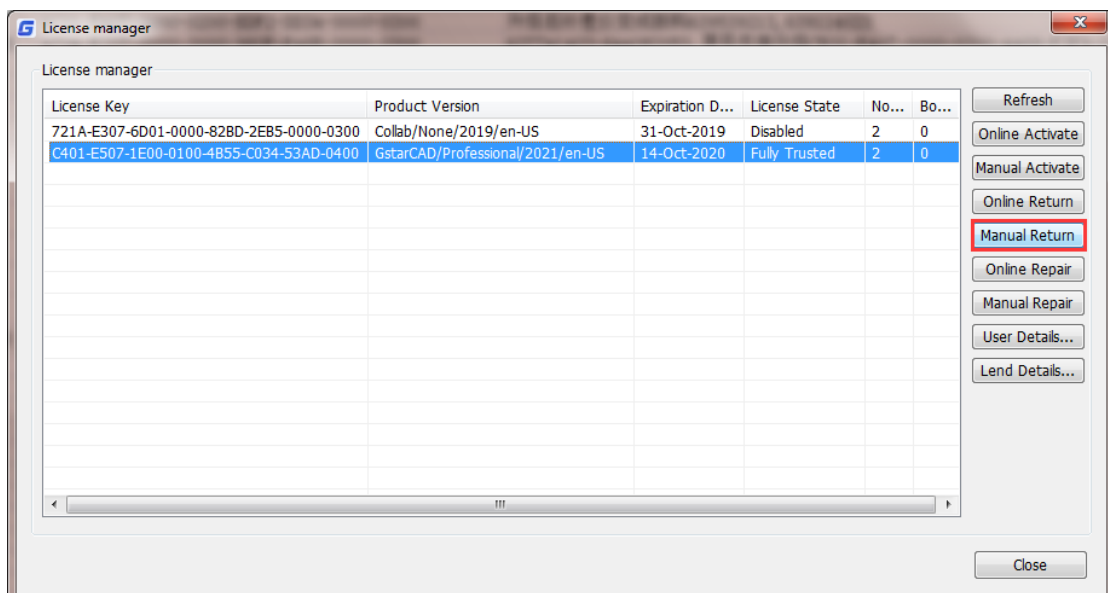
information.



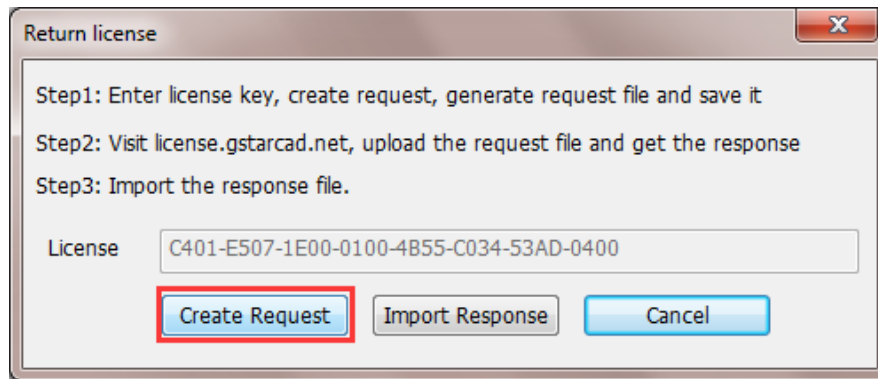
2.4 Manual Return

Instruction: If your computer is not connected to the internet, you can return your GstarCAD 2021 network license manually.

1. Select the license which you want to return and click [Manual Return](#).

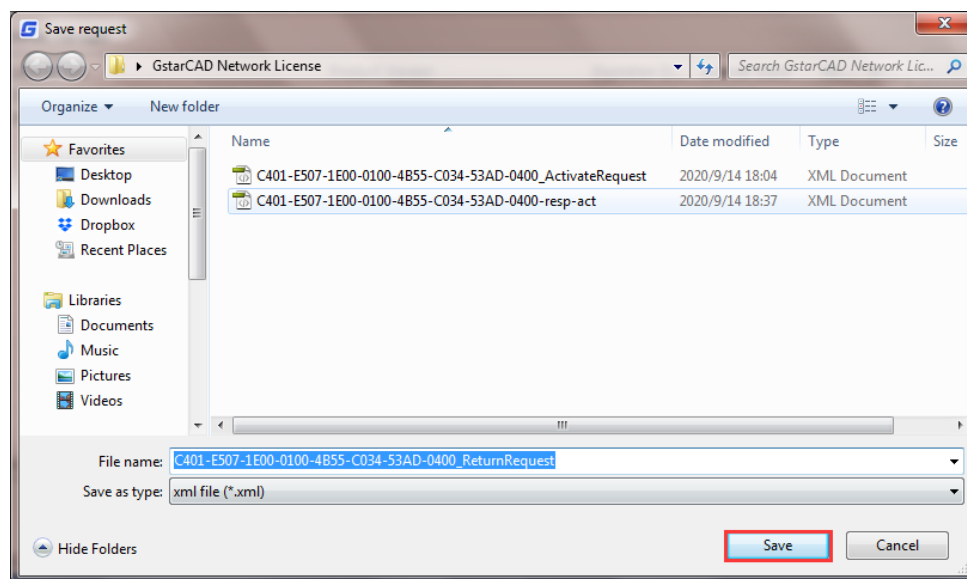


2. Please follow the three steps in the following dialog box to return GstarCAD network license manually.



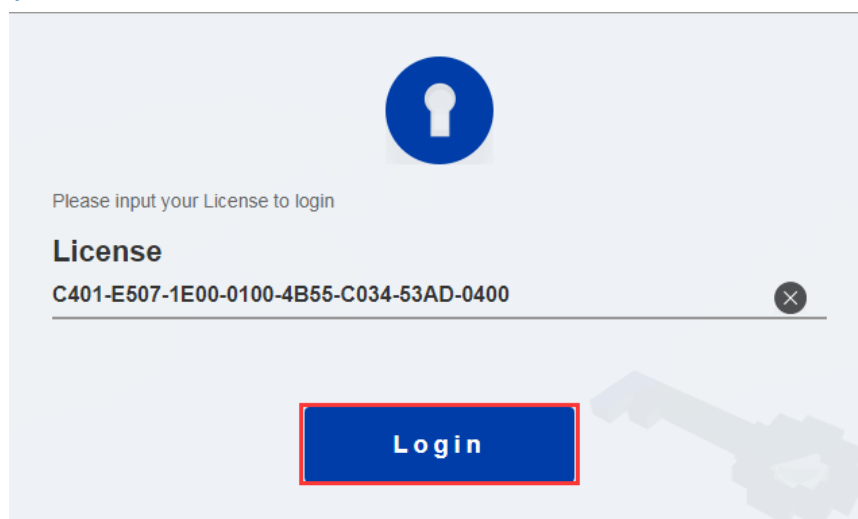
Steps 1:

- 1) Click **Create Request** button to generate and save the request file.

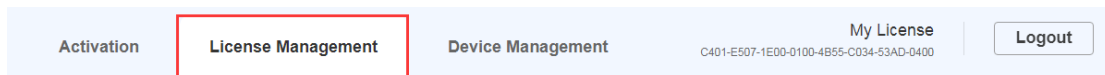


Steps 2:

- 1) Please access GstarCAD online service center: <https://license.gstarcad.net/> and login with the **License Key**.



2) Then Click [License Management](#) tab, and click [Return License](#) button to upload the return file.

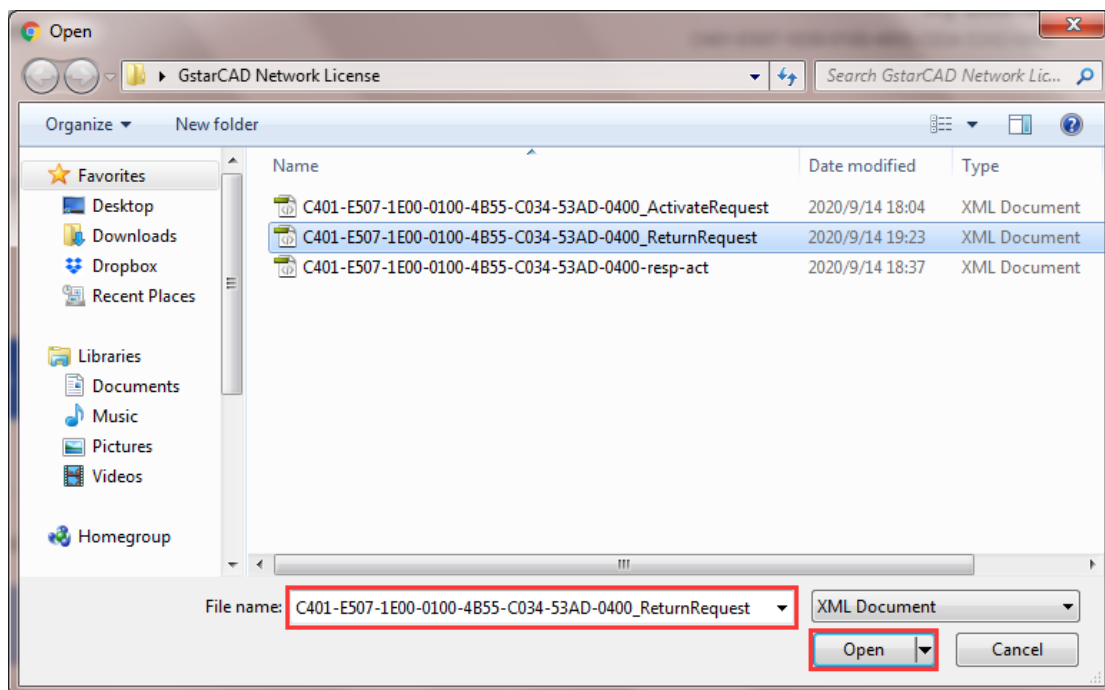


Return License

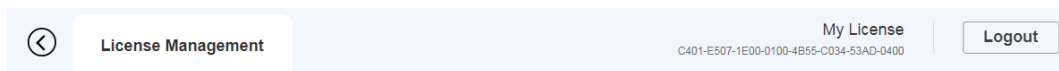
My License: C401-E507-1E00-0100-4B55-C034-53AD-0400

Product	Encryption Type	Network License Node Quantity	License Type	Language	Expired	License Status	Response XML
GstarCAD Professional 2021	FlexNet Network Version	2	Internal Use License	en-US	2020-09-14-2020-10-14	Activated	

Please download Response XML file to activate your product.
Please click "Return License" to return your license.



3) Choose the return request XML file you saved and click Submit to upload the return file.



My License: C401-E507-1E00-0100-4B55-C034-53AD-0400

Request XML File

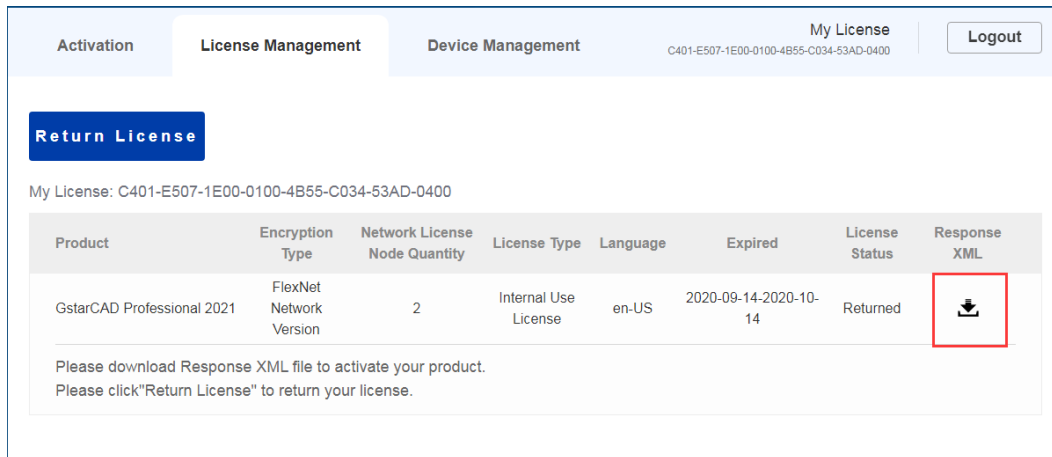
Choose File

Upload File: C401-E507-1E00-0100-4B55-C034-53AD-0400_ReturnRequest.xml

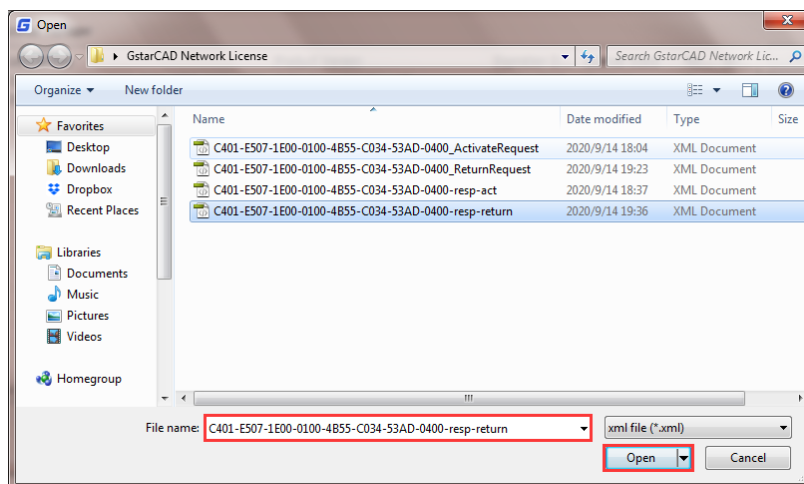
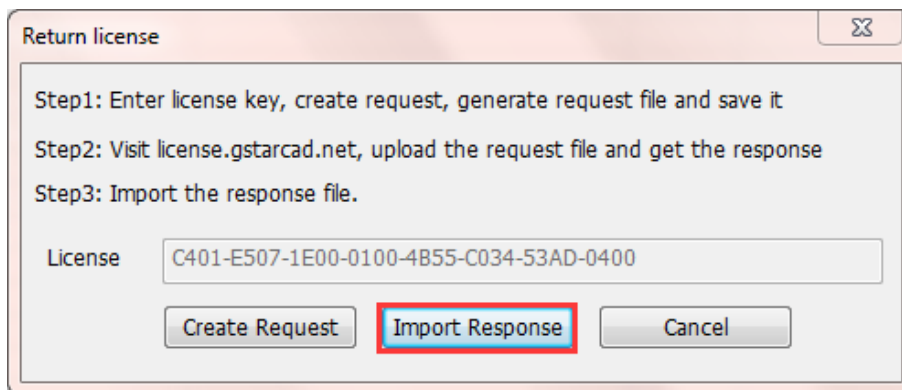
Load the credible request XML returned file which created at user client

Submit

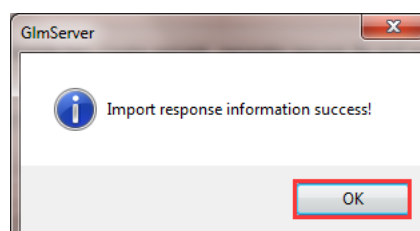
Find out the file and click it to submit



- Back to your computer and find out GstarCAD License manager, please click the **Import Response** button and select the license file you have just downloaded and saved from another computer.



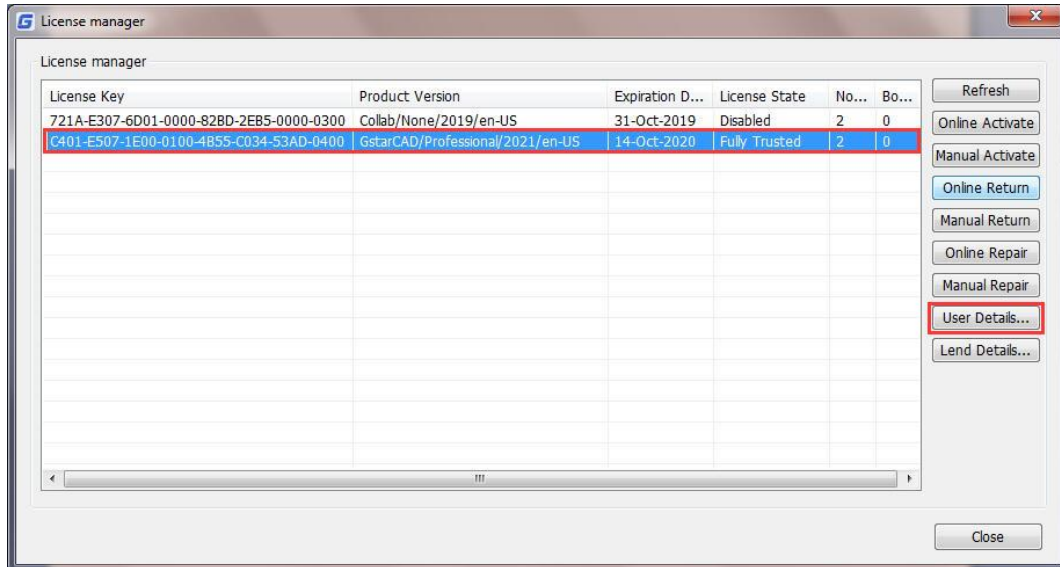
- Click **OK** button to finish returning the GstarCAD network license.



3. Check The Users Who Are Using The Network License from Your Server

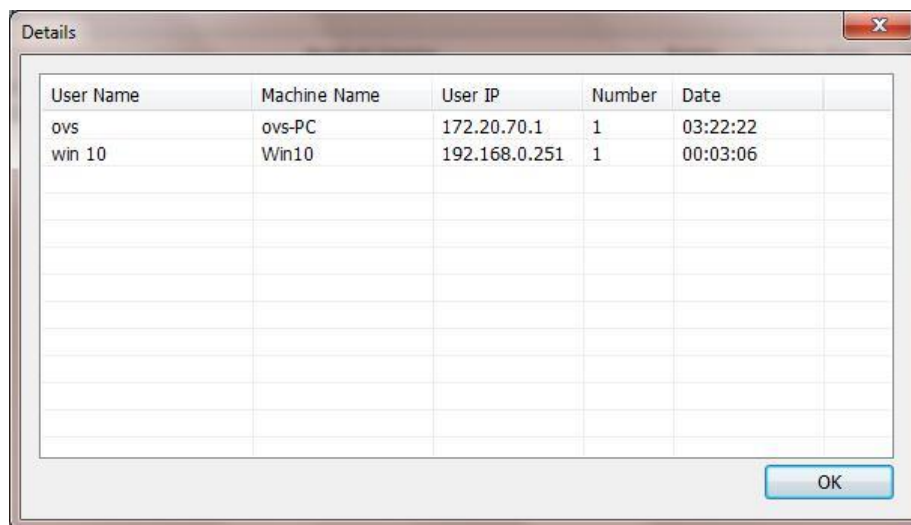
GstarCAD network license supports a pool of licenses (nodes) on the server and users who have the authorization (server IP and license Port) can activate the corresponding version from their side in the same LAN. When quit GstarCAD 2021, the license will be back automatically to license manager.

From the User Details, you will see the network licenses using information. Choose the correct product and click [User Details](#) from License manager.



You can check the the user number who are using the licenses in User Details to know the remaining available nodes.

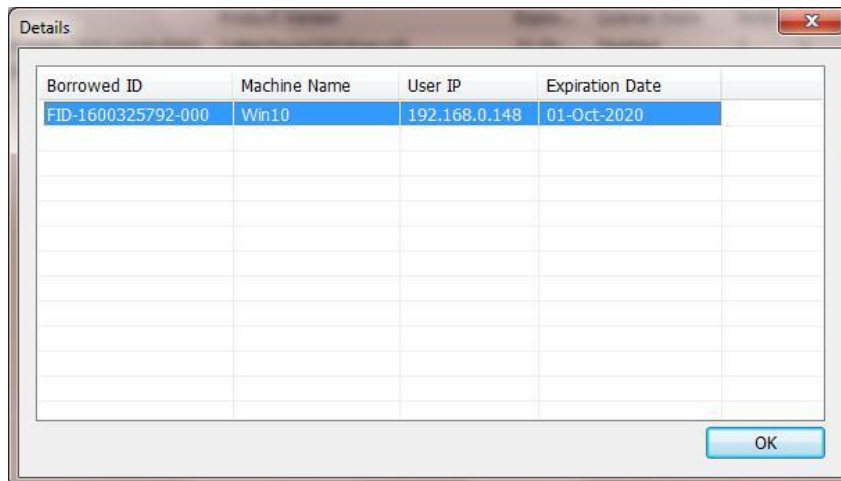
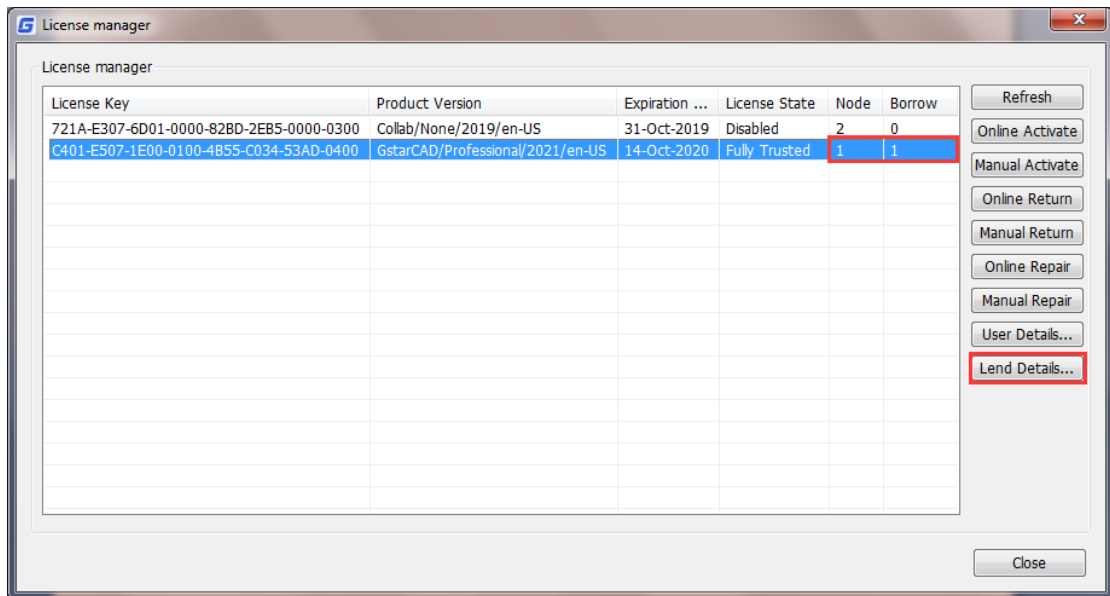
For example: If your network license has two nodes and two users activated and using currently. So there will be no available nodes left for other users to activate or borrow. If one from the two users quits GstarCAD 2021, the node will be back to license manager, and there will be one license available which can be activated or borrowed.



4. Check the Users Who Borrowed the Network License from Your Server

GstarCAD network license allows borrowing the node for a period from the server. The license manager list shows the lent node number and the available nodes left. The Lend Detail shows the lend information.

For example: If your network license has two nodes totally, one user borrowed a node from the server, so only one available node left that can be activated or borrowed.

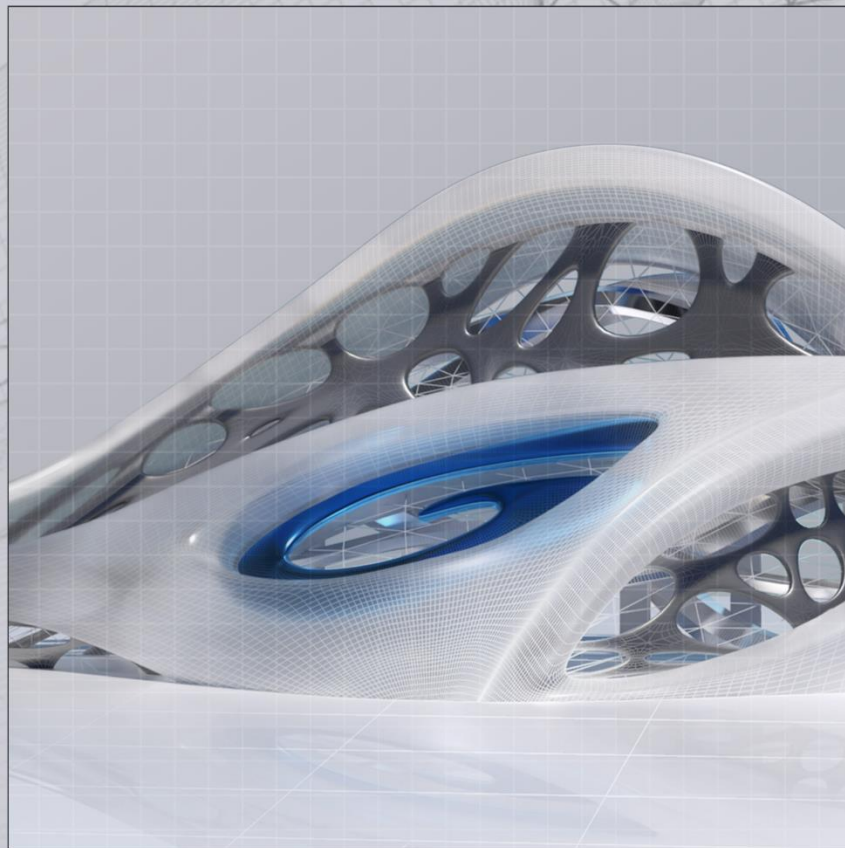


Note:

1. Few security softwares (anti-virus software) will cause GstarCAD Network License Manager run abnormally; you can quit the security software or add GstarCAD Network License Manager to credible path.
2. The Server computer name should be in English.
3. If the server computer has old GstarCAD License Manager version installed, please turn it off firstly, then install the latest GstarCAD Network License Manager.



GstarCAD 2021



■ <https://www.gstarcad.net/>